

 CIGNUS *Radio*

NX-200UV

THE NEXT LEVEL OF COMMUNICATION



 P.O.C

 ANALOG

NX-200UV

MAIN FEATURES



4G

4G LTE

The NX-200 POC two-way radio integrates 4G LTE technology, enhancing communication with faster data speeds and broader network coverage for reliable connectivity in various operational environments



S.O.S

S.O.S

The NX-200 POC two-way radio features an integrated S.O.S. function, providing a critical emergency signal capability for rapid response and enhanced safety in urgent situations.



G.P.S

The NX-200 POC two-way radio utilizes GPS with dispatcher integration, enabling precise location tracking and efficient coordination of personnel for optimized operational management and safety.



DUAL SIM CARD

The NX-200 POC two-way radio is equipped with dual SIM card slots, offering enhanced flexibility and reliability in communication by supporting two different network providers simultaneously.



GAME CHANGING RADIO

The NX-200 game changer PoC two-way radio represents a significant advancement in communication technology, boasting an array of robust features designed to enhance operational efficiency and reliability in diverse environments. With its superior audio quality and powerful signal transmission capabilities, the NX-200 ensures clear and effective communication even in challenging conditions.





- 1. Antenna for PoC
- 2. On/Off Knob
- 3. Antenna for Analog
- 4. Screen
- 5. Keypad

- 6. Audio Jack
- 7. SimCard Slot
- 8. Programming Cable port

- 9. NX-200 Cover
- 10. Charging Port

- 11. PTT for Analog
- 12. PTT for POC
- 13. Fm Button



NX-200UV

**first in the PHILIPPINES!
PoC to Analog Two way Radio!**

CIGNUS Radio
NX-200UV

General

Weight	360G
Dimension	156x70x45mm
Battery	3100mAh
Frequency Range	UHF&VHF
Channel Capacity	32 x 30
Channel Step	25KHz(W) 12.5KHz(N)
Frequency Stability	±2.5ppm
Operating Voltage	7.4V DC ± 20%
Operating Temperature	-20°C ~ +60°C
Antenna Impedance	50 Ω

Transmitter

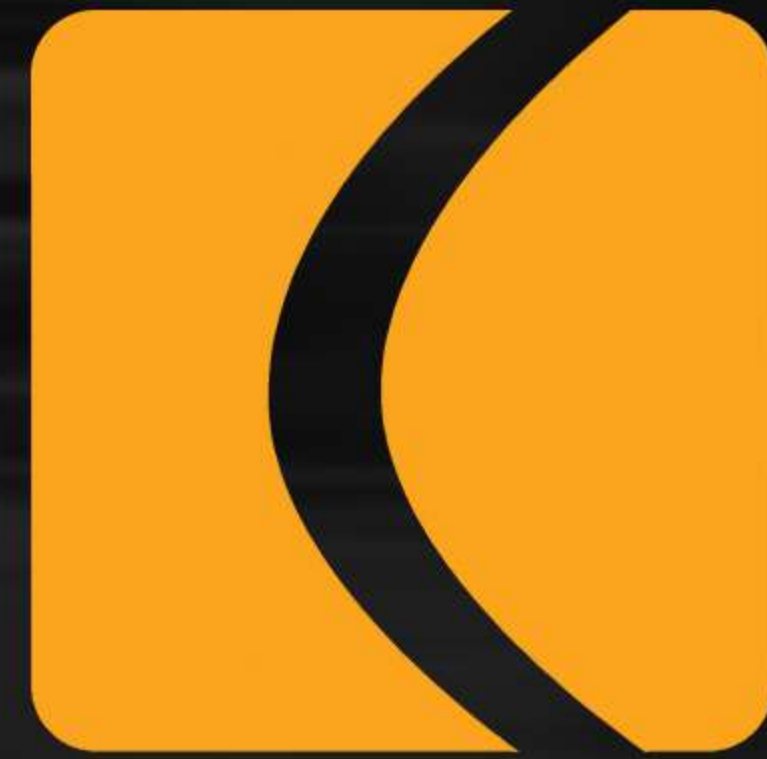
Output Power	5W
Modulation Mode	W: 16K φ F3E ; N: 8K φ F3E
Adjacent Channel Power	W: ≥65dB ; N: ≥60dB
Signal Noise Ratio	≤-40dB
Parasitic Harmonic	W: ≤65dB ; N: ≥60dB
Spurious Emission	9KHz-1GHz≤-60dBc
Audio Response	300Hz-3KHz: ≤2%
Audio Distortion	≤5%

Receiver

Sensitivity	-120dBm (20db SINAD)
Intermodulation	W: ≥60dB ; N: ≥55dB
Adjacent Channel Selectivity	W: ≥60dB ; N: ≥55dB
Spurious Rejection	W: ≥60dB ; N: ≥55dB
Audio Response	300Hz-3KHz: +1~-3db
Signal Noise Ratio	W: ≥45dB ; N: ≥40dB
Audio Distortion	≤5%
Audio Output Power	1W

Network

Band	LTE-FDD B1/B3/B5/B8
	LTE-TDD B38/B39/B40/B41
Output Power	LTE-FDD B1 (10M) 23dBm±2dB
	LTE-FDD B3 (10M) 23dBm±2dB
	LTE-FDD B5 (10M) 23dBm±2dB
	LTE-FDD B8 (10M) 23dBm±2dB
	LTE-TDD B38 (10M) 23dBm±2dB
	LTE-TDD B39 (10M) 23dBm±2dB
	LTE-TDD B40 (10M) 23dBm±2dB
Receive Sensitivity	LTE-FDD B1 (10M) -98dBm
	LTE-FDD B3 (10M) -98dBm
	LTE-FDD B5 (10M) -98dBm
	LTE-FDD B8 (10M) -98dBm
	LTE-TDD B38 (10M) -98dBm
	LTE-TDD B39 (10M) -98dBm
	LTE-TDD B40 (10M) -98dBm
	LTE-TDD B41 (10M) -98dBm



Scan this QR code with your smart phone barcode scanner.




To browse our website for our products.

NTC Type approved:



1 YEAR PARTS WARRANTY AND LIFETIME SERVICE WARRANTY



WWW.CIGNUS.COM.PH



CIGNUSPH



CIGNUS PHILIPPINES INC.



CIGNUS PHILIPPINES

CIGNUS

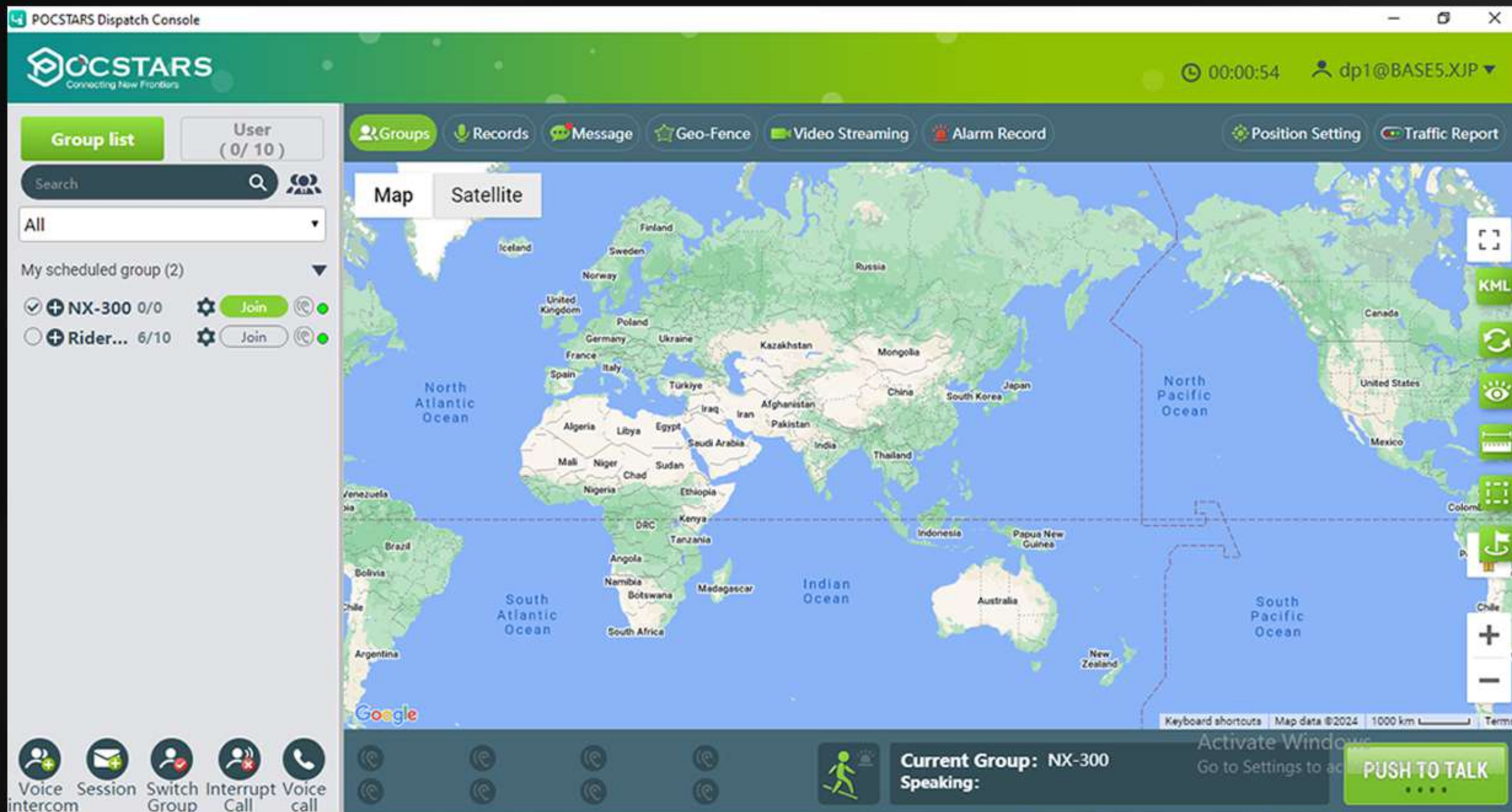
DISPATCHER APPLICATION

REALTIME, HASSLE FREE ENVIRONMENT

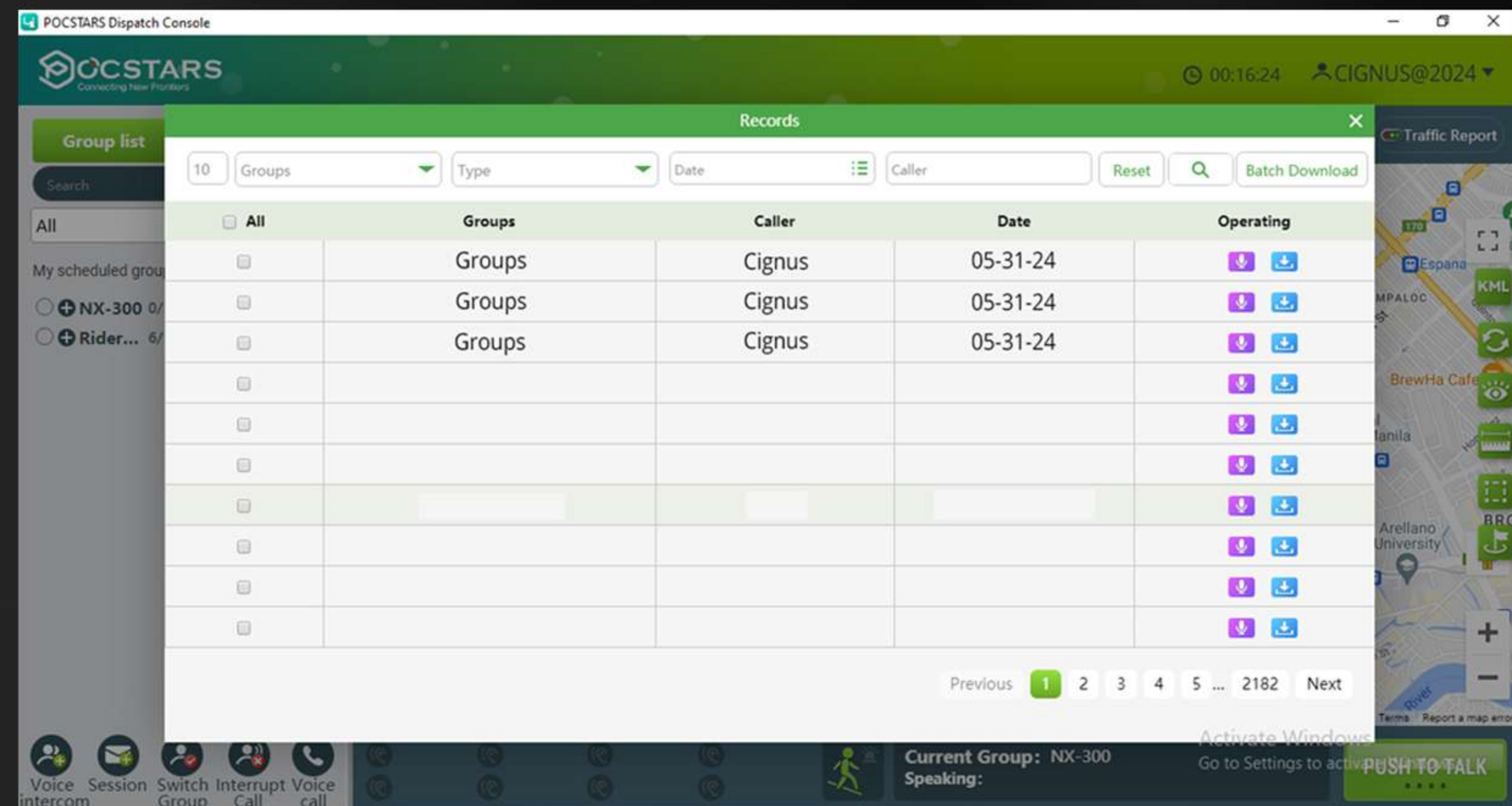




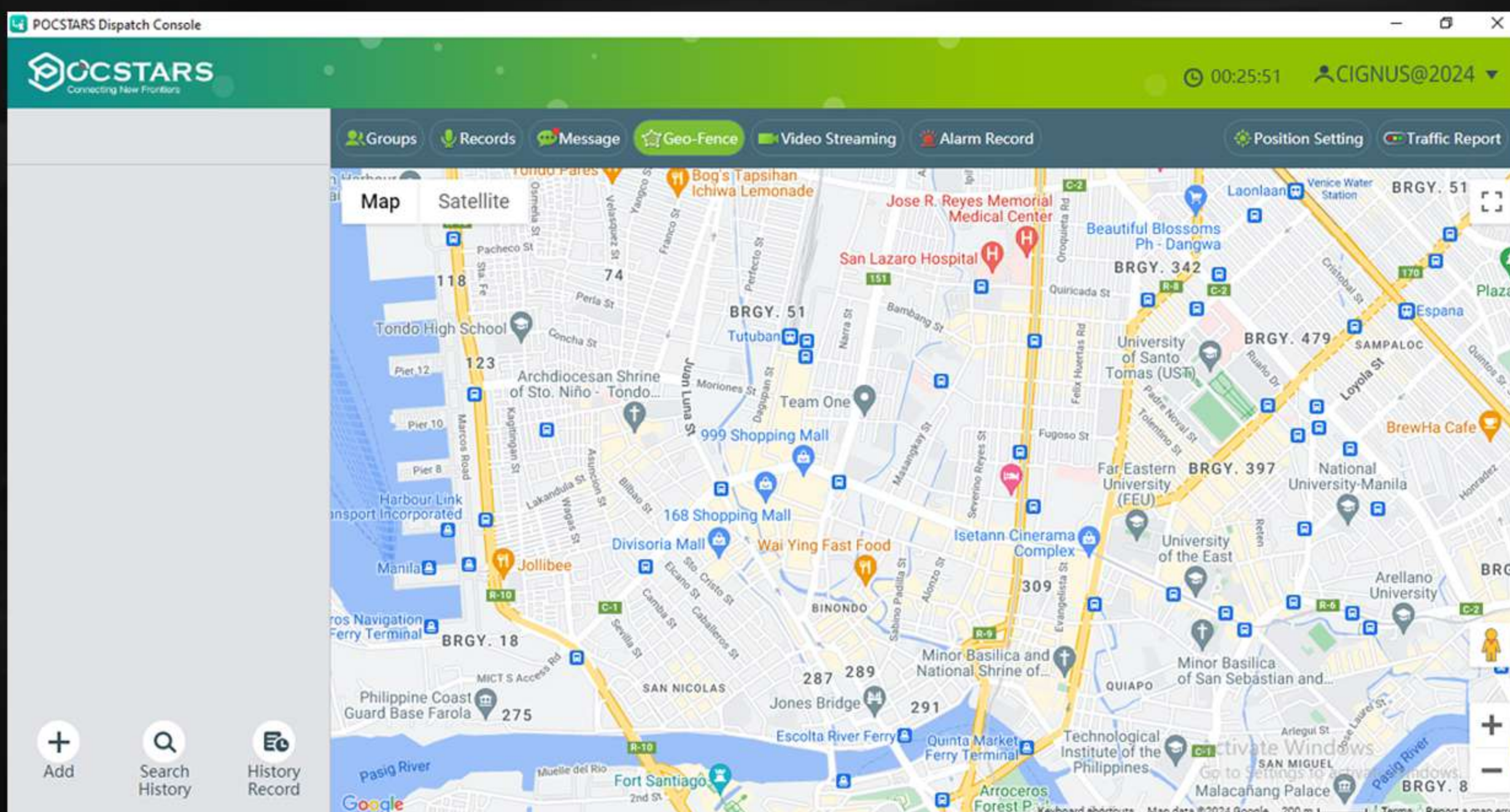
DISPATCHER APPLICATION SUPPORTS:



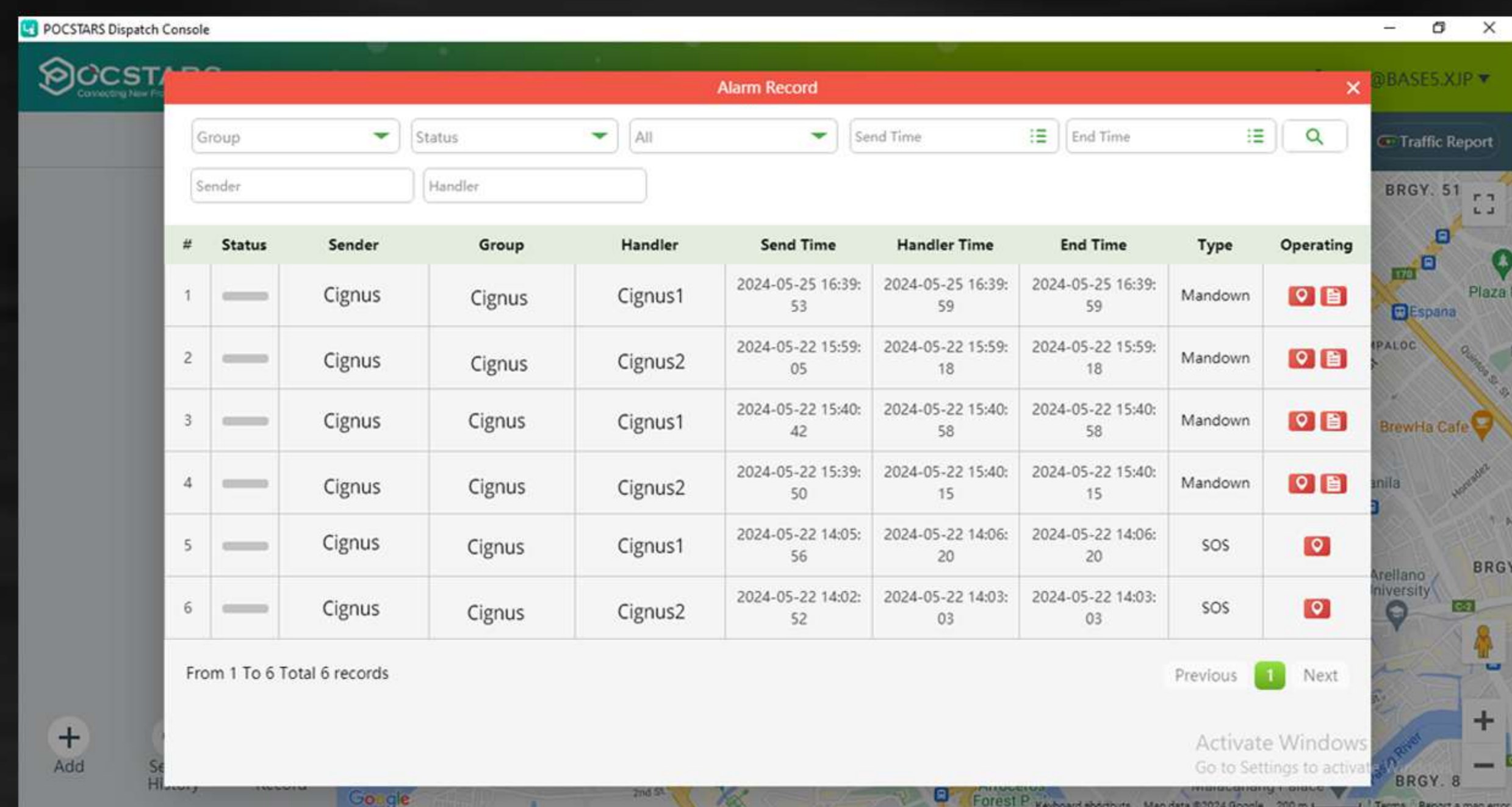
GROUPS (P.T.T)



RECORDS



GEO-FENCING



ALARM RECORDS



**1 YEAR PARTS WARRANTY AND
LIFETIME SERVICE WARRANTY**



Radio • Antenna • Power Supply • Accessories • S.A.F.E.